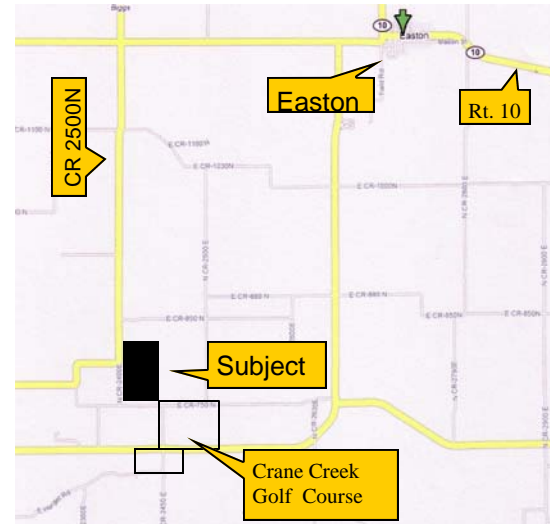


KENNEDY-SARFF REAL ESTATE, LLC



40 mi. NW of Springfield
46 mil. South of Peoria
4 mi. SW of Easton

Size

119.1 +/- Total Acres
104.4 +/- Tillable Acres

Real Estate Taxes

\$414 paid in 2005
(\$5.31 /acre)

Price

\$232,245
(\$1950/acre)

Predominant soils

Bloomfield, Alvin, Dakota,
Proctor, Plainfield

Buildings

None

Terms

Cash



Legal

Part of the SW 1/4 of the
SW 1/4 Section 16 and part of
W 1/2 of NW 1/4 Section 21,
T20N, R7W, Mason Co., IL

Zoning

Agriculture

Possession

Upon closing



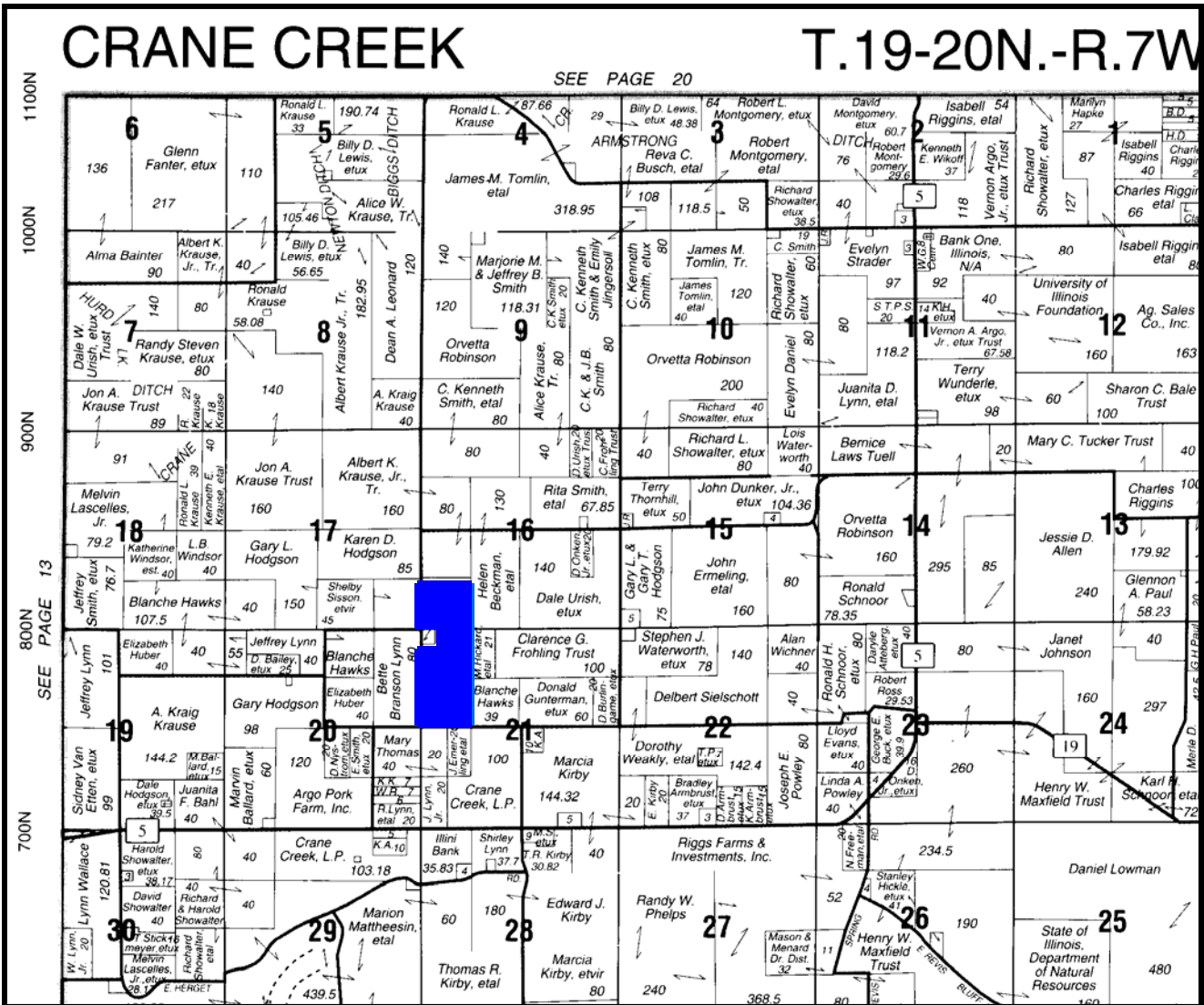
For more information contact:
Kennedy-Sarff Real Estate, LLC, 509 E. Laurel, Havana, IL
Darell Sarff 217-652-2356 or 309-543-4370

The information contained herein is from sources Kennedy-Sarff Real Estate, LLC considers reliable but is not guaranteed. This offer may be withdrawn from the market or be subject to a change in price or terms without advanced notice. Seller reserves the right to reject any and all offers.

CRANE CREEK

T.19-20N.-R.7W

SEE PAGE 20



Source: Rockford Map Publishers, Inc.
Mason County-Crane Creek Township

PLAT MAP

Branson Farm Crane Creek Township, Mason Co., IL