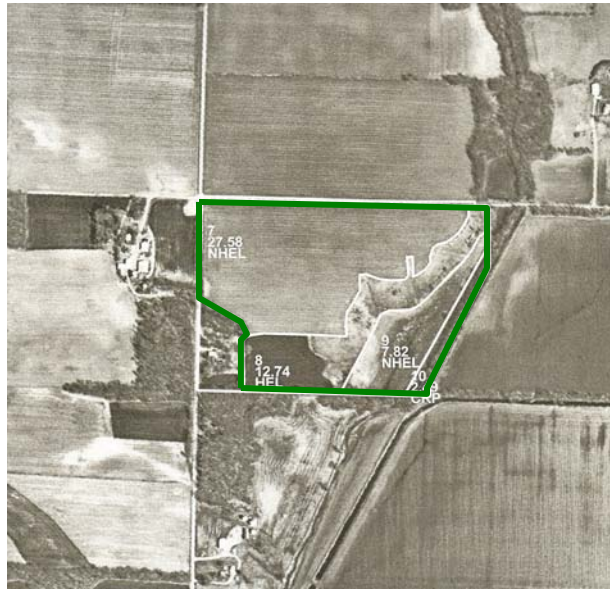
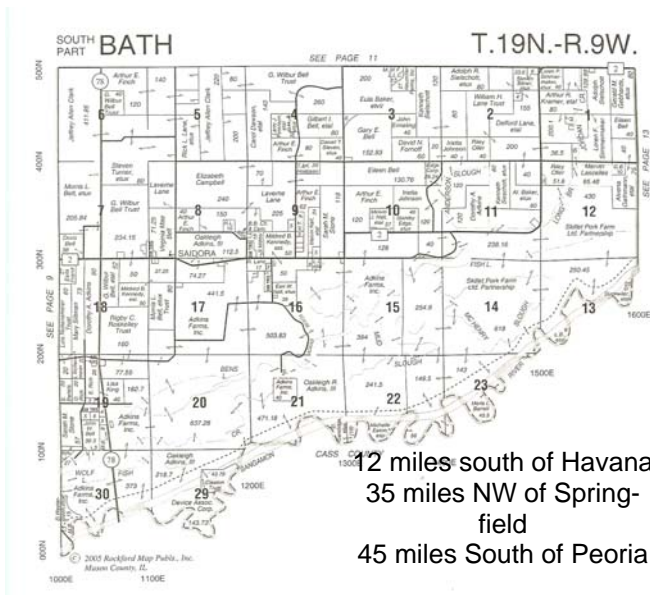


KENNEDY-SARFF REAL ESTATE, LLC



Size

58+/- Total Acres
50.63 +/-FSA tillable acres

Real Estate Taxes

\$143.45 paid in 2005
\$203.23 Drainage tax paid in 2005

Price \$145,000

Predominant soils

Ridgeville sandy loam, Beaucoup silty clay, Bloomfield sand

Terms

Cash

Legal

Northwest Quarter Section 12, and West Half of Northeast Quarter of Northwest Quarter Section 12, Twp 19 North, Range 9 West, Mason Co., IL

Possession

After harvest of 2007 crop



For more information contact:
Kennedy-Sarff Real Estate, LLC, 509 E. Laurel, Havana, IL
Darell Sarff, Broker 217-652-2356 or 309-543-4370

The information contained herein is from sources Kennedy-Sarff Real Estate considers reliable but is not guaranteed. This offer may be withdrawn from the market or be subject to a change in price or terms without advanced notice. Seller reserves the right to reject any and all offers.