

KENNEDY-SARFF REAL ESTATE, LLC



Tuell Farm
Crane Creek Township
Mason County, IL



Size: 295 +/- Total Acres
243.6 +/-Tillable Acres

Legal: Southwest Qtr. of the Northeast Qtr.;
West 60 A. of North Half of Northeast Qtr.;
North Half of Northwest Qtr.; West Half of
Southeast Qtr.; North 35 A. of Southeast Qtr. of
Northeast Qtr., all in Section 14, Twp. 20 North,
Range 7 West, Mason Co., IL

Location: 2 miles southwest of Easton
45 miles south of Peoria
40 miles northwest of Springfield

Predominate Soils: Bloomfield, Canisteo,
Thorp, Alvin, Onarga

Zoning: Agriculture

Real Estate Taxes: 414 in 2005
(\$5.31)

Buildings: 1 1/2 story farmhouse with garage
2—3300 bu. Grain bins

Price: \$760,000 includes house
(\$2576.27 /acre)

Terms: Cash



For more information on this property, contact:

Kennedy-Sarff Real Estate, LLC

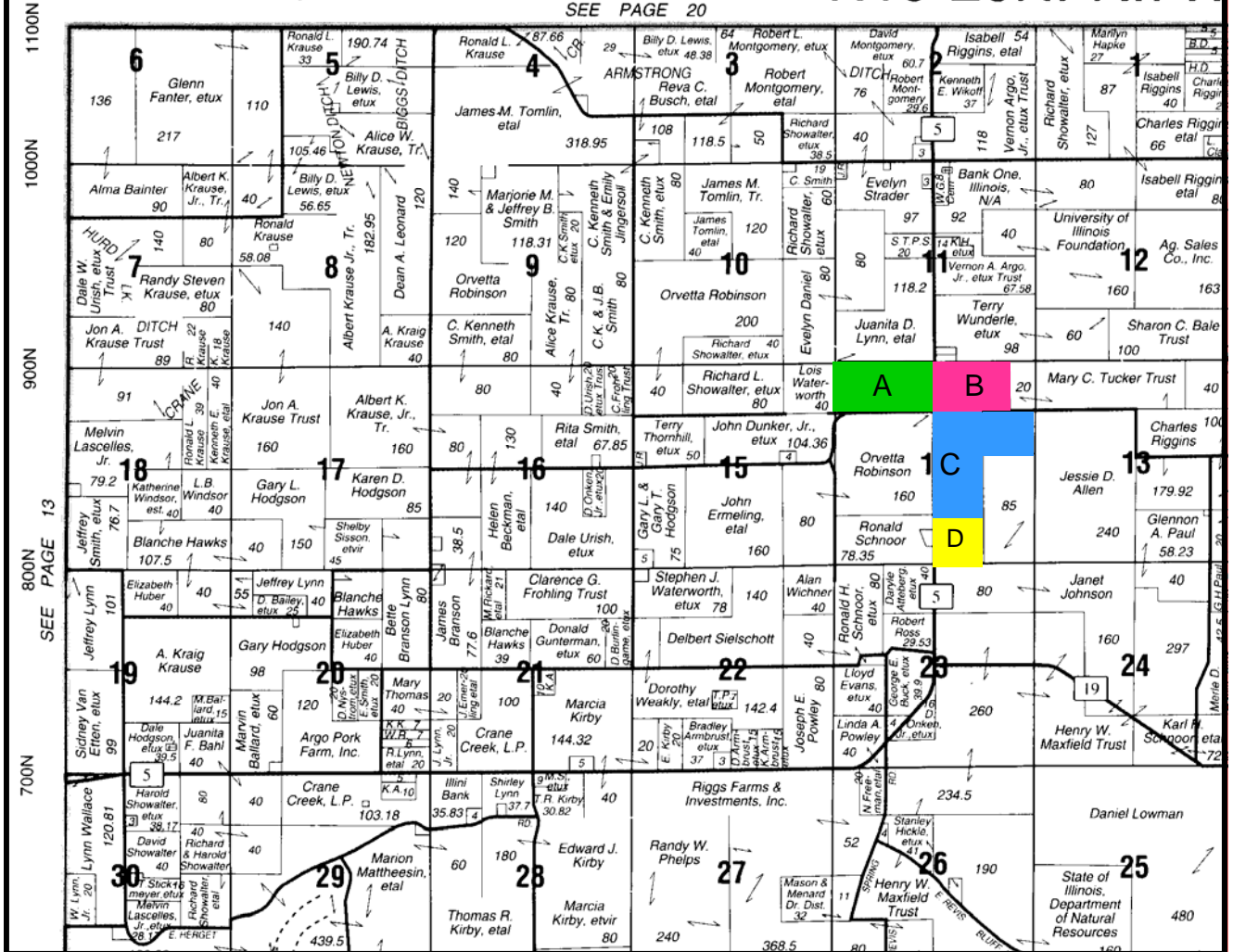
509 E. Laurel, Havana, IL
Darell Sarff, Broker
217-652-2356 309-543-4370
www.kennedyrealestateofillinois.com

The information contained herein is from sources Kennedy-Sarff Real Estate considers reliable but is not guaranteed. This offer may be withdrawn from the market or be subject to a change in price or terms without advanced notice. Seller reserves the right to reject

CRANE CREEK

T.19-20N.-R.7W

SEE PAGE 20



Source: Rockford Map Publishers, Inc.
Mason County– Crane Creek Township

| Tract | Acres |
|-------------|-----------------|
| ■ A Pending | 80 A with house |
| ■ B | 60 |
| ■ C | 115 |
| ■ D Pending | 40 |

PLAT MAP

Tuell Farm
Crane Creek Township, Mason Co., IL